



JMSync v1.0.2

Installation guide

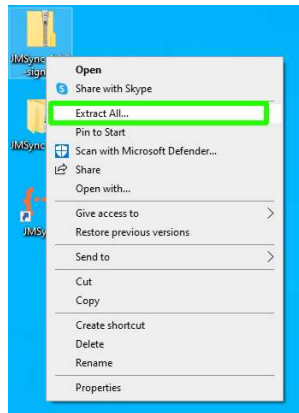
These instructions provide additional guidance for installing the latest version of JMSync on your computer. JMSync version 1.0.2 onwards supports Cabinet Vision™ 2022^[1] and prior versions (excluding CV8). Further details about the integration can be found on our academy page:

<https://academy.jobman.com.au/topic/cabinet-vision/>



Important: Before you begin, please Uninstall any previous version of JMSync you may have installed. This can be done from Start > “Add or remove programs”

1. Unzip the installer files: right click and choose “**Extract all...**”



2. Inside the folder with the extracted files, there are two folders, please use the 64-Bit version “JMSync_x64...” unless you know you have a 32 bit only system

Tip: Check what type of system you’re running: go to the start menu and type “About my pc”

Device specifications

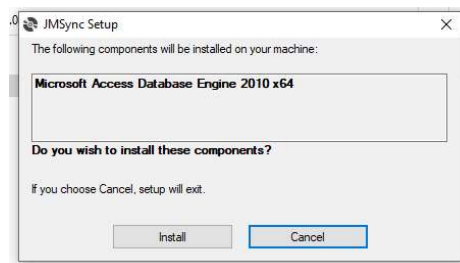
Device name	DESKTOP-...
Processor	11th Gen Intel(R) Core(TM) i7-1165G7 @ 2.80GHz 2.80 GHz
Installed RAM	4.00 GB (2.42 GB usable)
Device ID	...
Product ID	...
System type	64-bit operating system, x64-based processor
Pen and touch	Pen and touch support with 10 touch points

1 Cabinet Vision™ is a registered trademark of Vero Software Limited

3. Next, run the “setup” program (**all lower case**) by double clicking on the icon shown below:



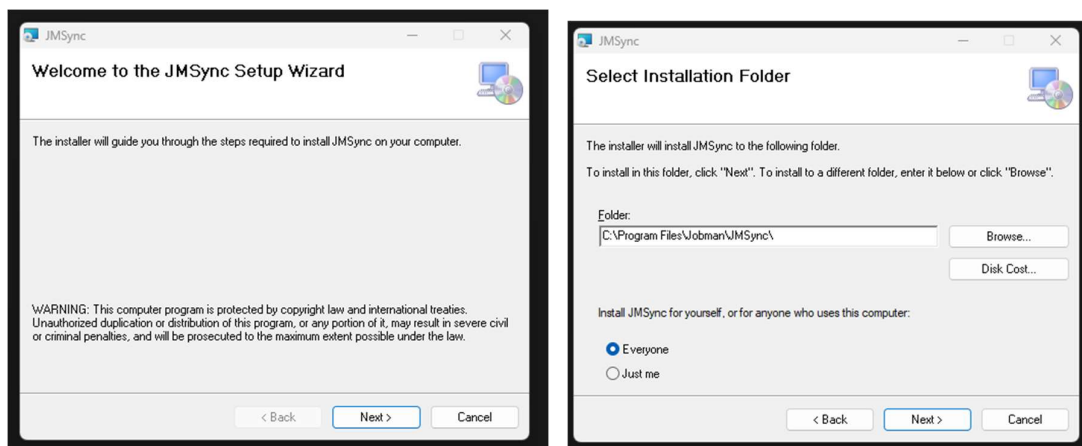
4. Install the prerequisite database engine as shown below, choose “Install”



This may prompt you with a windows UAC confirmation dialog, please chooses “yes”

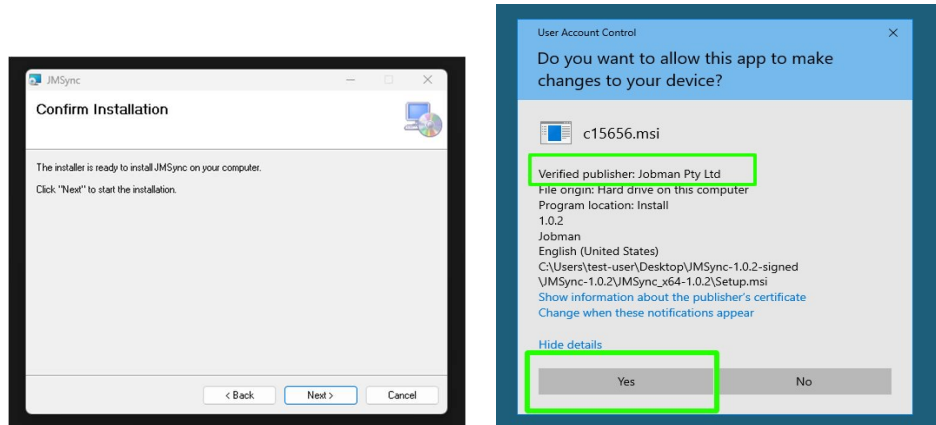


5. Once the prerequisite software above is installed, the installer will automatically launch the JMSync installation, you can use the default options unless otherwise advised.



Note, you may be prompted again by windows UAC to confirm the installation, as show below. Note that the verified publisher is “Jobman Pty Ltd” and press YES.

In the unlikely event that the publisher is “Unknown” please do not continue and instead contact [Jobman support](#).



6. JMSync is now installed. To continue configuring the installation for your Cabinet Vision™ please visit our academy page: <https://academy.jobman.com.au/topic/cabinet-vision/> or contact us to book a training session where we can demonstrate the correct way to configure and use this.



Tip: You can verify the latest version is installed by checking the version number from Settings:

